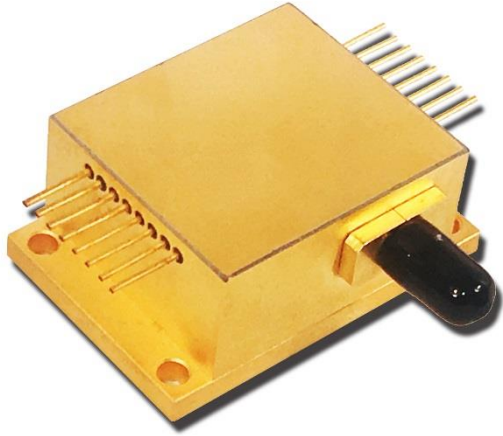




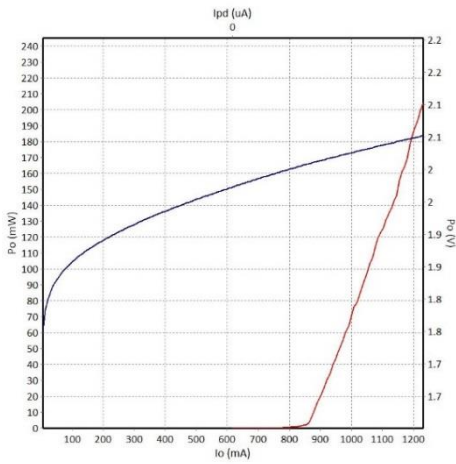
650&808&980nm Laser Diode Module

R650/808/980±10-0.2/10/10WD-C4T-TFS

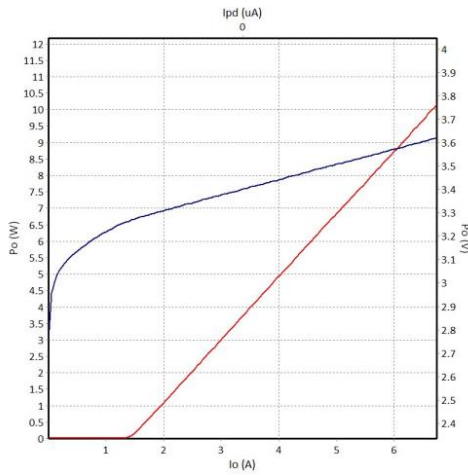


Feature
Output power: 0.2W@650nm 10W@808nm 10W@980nm
Center wavelength: 650±10nm 808±10nm 980±10nm
Fiber core: 400µm
Numerical aperture: 0.22NA
Application
Medical use

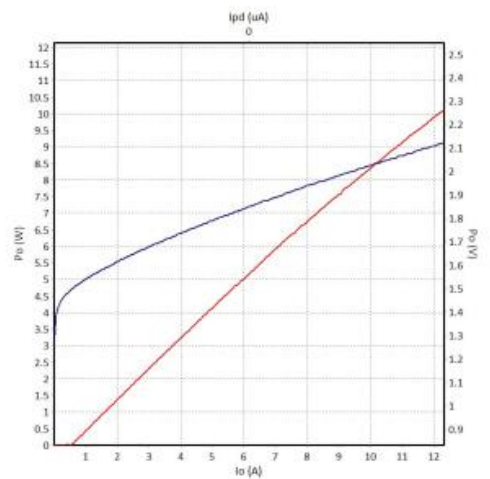
650&808&980nm characteristics (25°C)



650nm P-I-V graph



808nm P-I-V graph



980nm P-I-V graph

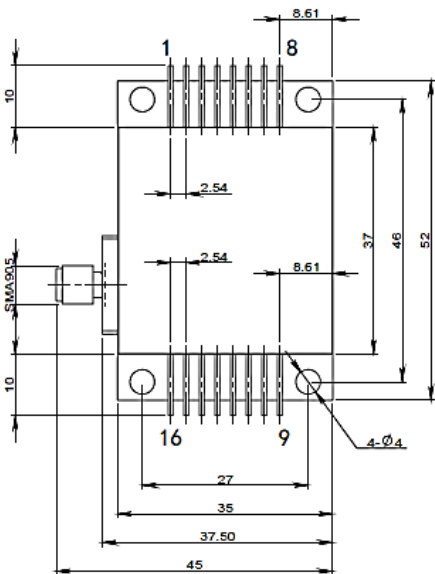
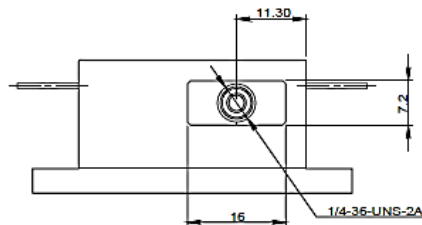
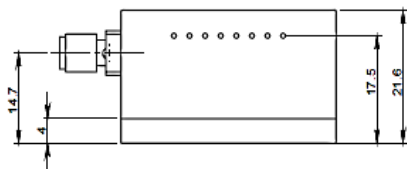
Parameters

Parameter	Operating Temperature /°C	Operating Relative Humidity /%	Storage Temperature /°C	Storage Relative Humidity /%	Lead Soldering Temperature (max/°C)
Min	10	-	-20	-	-
Max	30	75	70	90	250(10Sec.)

Typical Device Performance(25°C)

Parameter	Symbol	Typical value			unit	
		R650/808/980±10-0.2/10/10WD-C4T-TFS				
Optical	CW output power	P _{op}	0.2/650nm	10/808nm	10/980nm	W
	Center wavelength	λ _c	650±10	808±10	980±10	nm
	Spectral width	Δλ	≤5			nm
	Temperature drift of wavelength	Δλ/ΔT	0.3			nm/°C
Electrical	Threshold current	I _{th}	0.87	1.42	0.56	A
	Operating current	I _{op}	1.22	6.66	12.15	A
	Operating voltage	V _{op}	2.05	3.62	2.12	V
	Slope efficiency	η _{es}	0.6-0.9			W/A
	PD current	I _{PD}	<3000			μA
	Thermistor	R _t	10±5%/3450			kΩ/β(25°C)
	TEC Max current	I _{tmax}	6.0			A
	TEC Max voltage	V _{tmax}	9.8			V
Fiber	Fiber core	d _{core}	400			μm
	Numerical aperture	NA	0.22			-
	Connector	-	SMA905			-

Package Dimensions (mm)



Pin	Function	Pin	Function
1	Thermistor	9	TEC (+)
2	Thermistor	10	-
3	Laser 650 (-)	11	-
4	Laser 650 (+)	12	FCD PD (P)
5	Laser 808 (-)	13	FCD LED (-)
6	Laser 808 (+)	14	FCD LED (+) PD (N)
7	Laser 980 (-)	15	TEC (-)
8	Laser 980 (+)	16	Case