

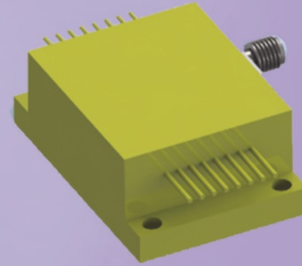


Medical and Cosmetology

808nm/980nm/1064nm/1470nm/1550nm Diode Laser

Applications

- Physiotherapy
- Varicose vein treatment
- Dental treatment



	Typical Value							Units
Optical Parameters (25°C)								
Center Wavelength	808	808	980	980	1064	1470	1550	nm
Center Wavelength Tolerance	±10							nm
CW Output Power	15	30	15	35	30	15	15	W
Spectral Width (90% of Power)	<6.0							nm
Wavelength Shift with Temperature	0.3							nm/°C
Threshold Current	1.8	1.8	0.7	1.2	0.9	0.5	0.7	A
Operating Current	9.0	9.0	9.0	15	12.0	6.8	7.5	A
Operating Voltage	3.6	7.2	3.4	5	4.7	9.7	11.6	V
Slope Efficiency	2.0	4.0	1.8	2.5	2.7	2.5	2.0	W/A
Power Conversion Efficiency	45	45	46	46	53	23	17	%
Fiber Characteristics¹								
Core Diameter	200							µm
Numerical Aperture	0.22							-
Fiber Length	1.0							m
Fiber Connector ²	SMA905							-
Accessories								
Aiming Laser(650nm) ²	Optional							-
TE Cooler	None							-
Monitor Photodiode	Optional	Optional	Optional	Optional	Optional	Optional	Optional	-
Fiber Connector Detector	Optional	Optional	Optional	Optional	Optional	None	None	-
Protection Window	Optional	Optional	Optional	Optional	Optional	None	None	-
Packaging								
Package Model	G3	G5	G3	G3	G3	C5	C5	-
Absolute Ratings								
Operating Temperature	+10~+40							°C
Operating Relative Humidity	<75							%
Storage Temperature	-20~+80							°C
Storage Relative Humidity	<90							%
Soldering Temperature, 10s max	<250							°C

¹ Customized fiber and connector available.

² Optional built-in constant power circuit, 5V power supply needed. Blue or green aiming beam available.

* Other wavelengths: 405nm, 635nm etc.