

FIBER COUPLED MODULE

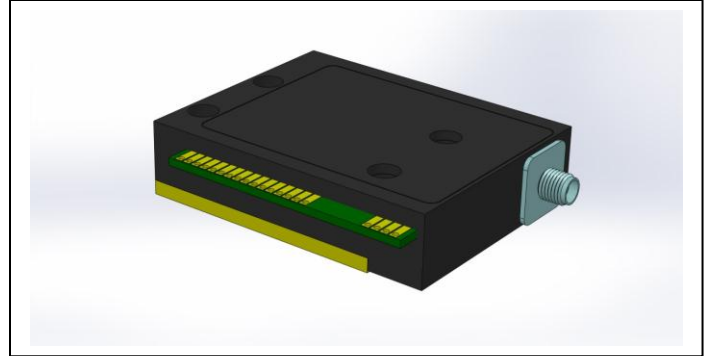
MEDIC-XL

Features

- Detachable fiber
- Conduction cooled package
- Thermistor
- Monitor photodiode
- Fiber sensor
- MULTI WAVELENGTH
- Designed for use with TEC with footprint 40 mm x 40 mm

Benefits

- Compact and low cost with High Brightness
- Multi wavelength output from the same SMA connector



Optical Parameters					
Center Wavelength	nm		808	975	
Center Wavelength Tolerance	nm		±5	±10	
Output Power	W		7	8.5	
Electrical Parameters					
Operating Current	A		<7	<9	
Operating Voltage	V		<2.3	<2.5	
Fiber Parameters					
Numerical Aperture	NA		0.22		
Fiber Core Diameter	μm		400		
Fiber Connector HP-SMA 905 with Free Standing Fiber Tips					
Optional Features					
Temperature Sensor NTC	kOhm		10		
Power Monitor Photodiode					
Optical switch Fiber Sensor					

