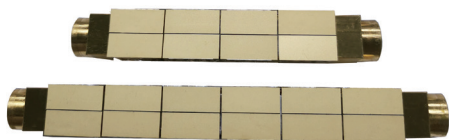


# QCW Linear Diode Laser Array



Reallight's QCW linear diode laser array is comprised of 2-6 pieces of bars arranged into a line. Utilizing the high reliable AuSn solder technology, this product features low thermal resistance, high efficiency and high reliability. The side-pumped laser module based on multiple arrays is widely used in the manufacturing of high energy solid state lasers, and is perfect for applications include national defense, medical treatment, aerospace and industrial processing. In addition to standard specifications, other wavelengths and output powers are available upon request.

## Key Features

- ◆ Compact design
- ◆ AuSn solder for packaging
- ◆ High reliability
- ◆ High conversion efficiency
- ◆ High power density

## Applications

- Pump source
- Material processing
- Laser illumination
- Aesthetic medicine
- Scientific research

## Technical Specifications

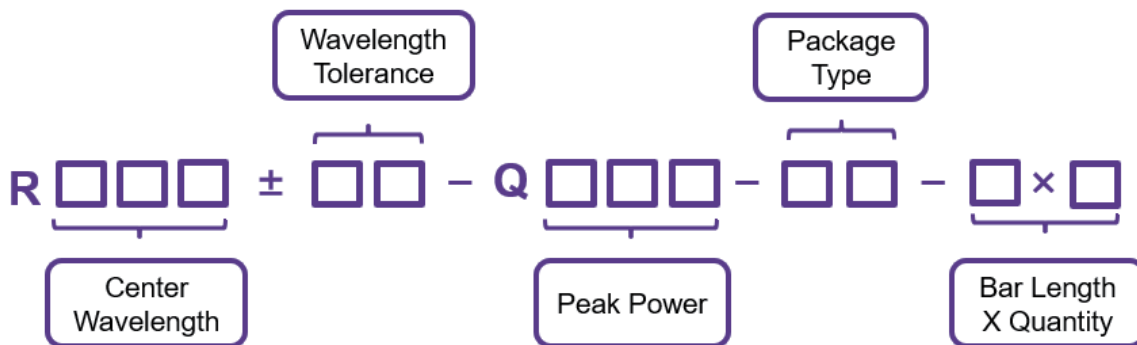
Parameters	Unit	R808±3-Q1000-WHA01-10X4	R808±3-Q1500-WHA02-10X6
Center Wavelength	nm	808	808
Wavelength Tolerance	nm	±3	±3
Spectral Width	nm	≤5nm	≤5nm
Peak Power	W	1000	1500
Bar Numbers	-	4	6
Fast Axis Divergence Angle (1/e <sup>2</sup> )	°	≤70	≤70
Slow Axis Divergence Angle (1/e <sup>2</sup> )	°	≤12	≤12
Threshold Current	A	≤25	≤25
Operating Current	A	250	250
Operating Voltage	V	8	12
Duty Cycle	%	10	10
Max Pulse Width	ms	10	10
Repetition Rate	Hz	≤100	≤100
Water Flow Rate	L/min	5	5
Operating Temperature	°C	20-25	20-25

\*Other lasers can be customized upon request.

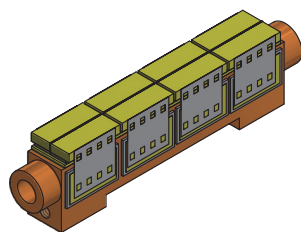
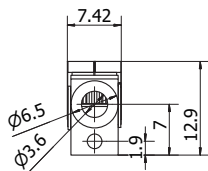
## Order Information

Package Type	Wavelength (nm)	Peak Power (W)	Part Number
WHA01	808	1000	R808±3-Q1000-WHA01-10X4
WHA02	808	1500	R808±3-Q1500-WHA02-10X6

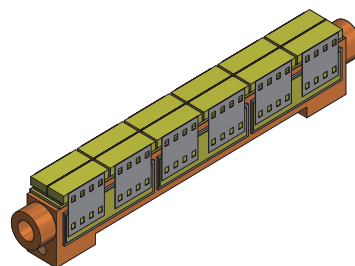
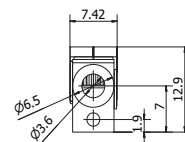
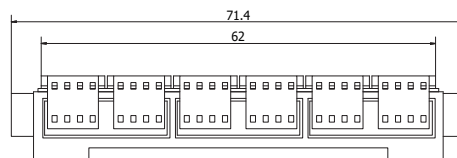
## Part Numbering Schema



## Mechanical Drawings (in mm)



4bar Drawings



6bar Drawings

